



Data Transformation Hub for Content Suite and Extended ECM Users

December 7, 2021

Brian LaPointe – VP Sales, Americas
Brian.LaPointe@fastman.com / T: 310-525-8802

The Data Challenge

OpenText Content Server is designed to process and manage large volumes of content

But provides limited tools for updating and importing the content effectively

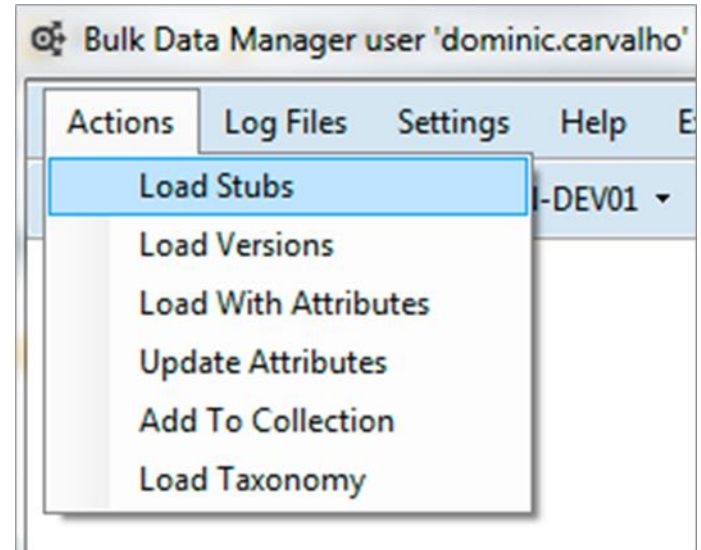
What Happens When You Want To ...

- Update related documents in sets or in bulk
- Bulk update records management
- Add versions of many files at once
- Schedule automated processes after hours
- Apply smart data validation before processing, not during
- Import or migrate documents and content
 - retaining creation date, modification date and assign owner

Fastman Bulk Data Manager

Fastman Bulk Data Manager is the most flexible data migration and transformation solution for OpenText Content Server.

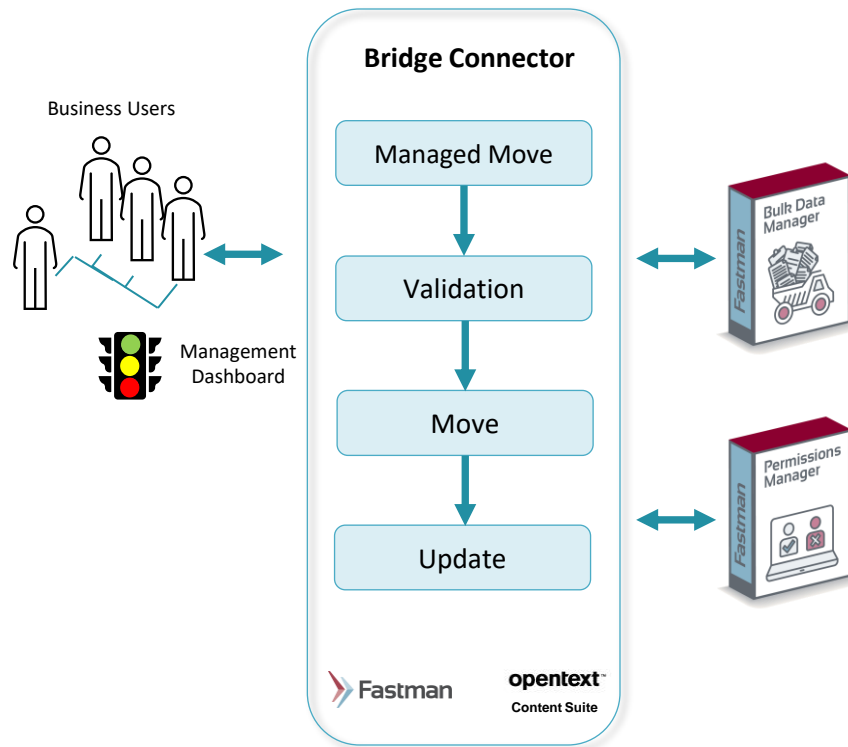
It simplifies volume updates of documents and metadata within Content Server, optimizing your business processes and reducing administrative overheads.



Combined with Fastman Bridge Connector

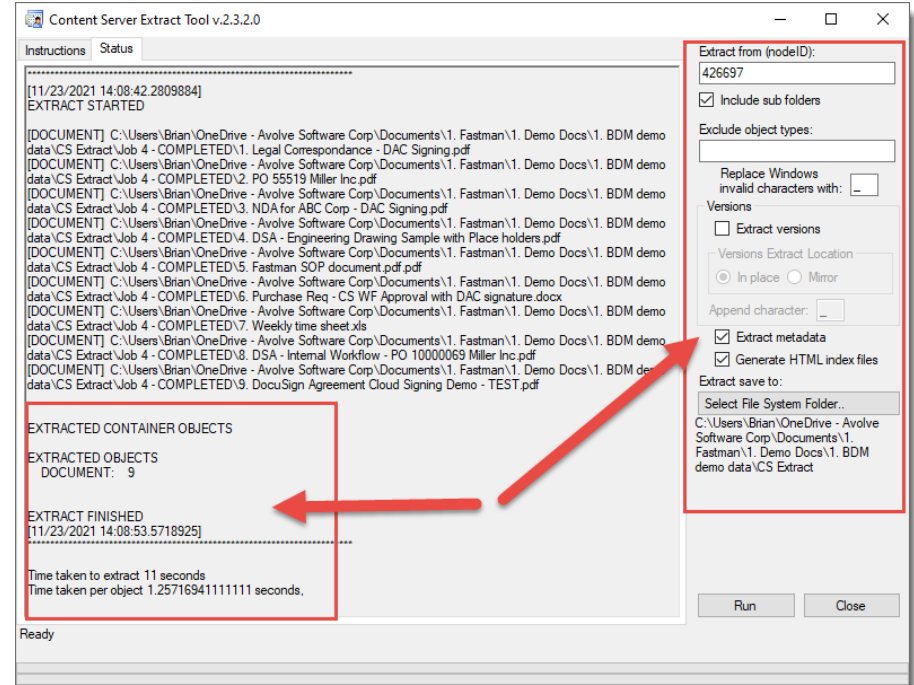
Managed Moves and Updates in your OpenText Content Suite and Extended ECM Environment

- Manage moves of content from one or more places within Content Suite or Extended ECM to a new location
- Add / update categories and attributes, file name changes, permission changes, and clean-up empty folders.
- Track progress and quickly access assignments from the Dashboard
- Integrates with the Fastman Bulk Data Manager and Permissions Manager solutions.



Extraction Tool

- Readily extract data from CSP in a few clicks at no effort
- Free your team from repetitive and error-prone manual tasks
- Enable faster data sharing with other systems
- Simple installation requires no server-side components, run securely from a PC



Fastman Spotlights

SnoPUD Use-Case: Load Taxonomy

SnoPUD is retiring multiple large 'division folders' sets located on shared drives and migrating to the Content Suite Platform.

Using BDM, SnoPUD loads folder structures with documents to CSP whilst enriching the meta-data (categories/attributes).

By using BDM, the transition to the OT Cloud was eased whereas you can use BDM in both environments. No scripting is required and business users can perform the migration. The architecture allows for the client to push content located on shared drives to a CSP cloud deployment.

The screenshot displays the Bulk Data Manager (BDM) interface. At the top, it shows the user 'admin' connected to the 'Fatman demo server'. The main window displays a file list with columns for file names, sizes, and dates. A context menu is open over the file list, with 'Load Taxonomy' selected. The menu options include: Actions, Log Files, Settings, Help, Load Stubs, Load Versions, Load With Attributes, Update Attributes, Add To Collection, and Load Taxonomy. The file list shows a large number of files, including folders like 'Enterprise Fatman Products' and 'Enterprise Fatman Products (Demo)'. The status bar at the bottom indicates 'Status: Ready' and '1 Running'.

Fastman Spotlights

CNL Use-Case: Create Procedure Centre Workspace

CNL needed all procedural documents located in one workspace.

Using BDM (**Load Taxonomy**) the Procedure Centre structure containing over **800 folders** has been created in approximately **30 minutes**

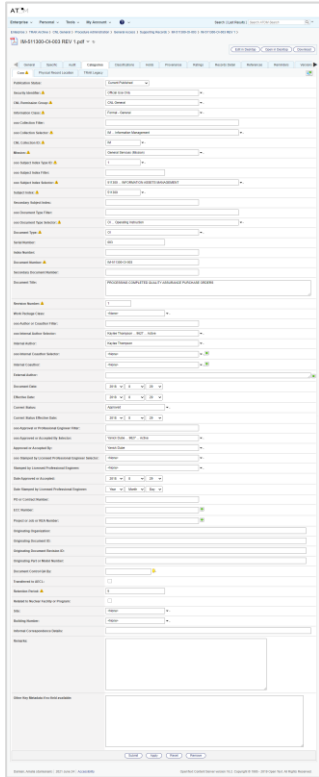
```
damianam-LoadTaxonomy-2021-02-28-09-27.log
damianam-LoadTaxonomy-2021-02-28-10-05-24.log
damianam-LoadTaxonomy-2021-02-28-10-30-50.log
damianam-LoadTaxonomy-2021-02-28-12-01-08.log
damianam-LoadTaxonomy-2021-02-28-13-09-54.log
damianam-LoadTaxonomy-2021-02-28-13-28-28.log
damianam-LoadTaxonomy-2021-02-28-13-42-28.log
damianam-LoadTaxonomy-2021-02-28-14-22-09.log
damianam-LoadTaxonomy-2021-02-28-14-49-20.log
damianam-LoadTaxonomy-2021-02-28-15-17-14.log
damianam-LoadTaxonomy-2021-02-28-15-26-45.log
damianam-LoadTaxonomy-2021-02-28-15-41-17.log
damianam-LoadTaxonomy-2021-02-28-15-56-52.log
damianam-LoadTaxonomy-2021-02-28-16-10-37.log
damianam-LoadTaxonomy-2021-02-28-16-27-20.log
damianam-LoadTaxonomy-2021-02-28-16-43-23.log
damianam-LoadTaxonomy-2021-02-28-17-23-03.log
damianam-LoadTaxonomy-2021-02-28-17-59-24.log
Administration:Supporting Records:Management System Documents:Workplace Ergonomics:CI
https://nls948.corp.cnl.ca/otcs/cs.exe/properties/54203060 Enterprise:Corporate Records:Ir
Administration:Supporting Records:Management System Documents:Workplace Hazardous Me
(STD):Current Approved Revision
https://nls948.corp.cnl.ca/otcs/cs.exe/properties/54203368 Enterprise:Corporate Records:Ir
Administration:Supporting Records:Management System Documents:X-Ray Emitting Devices:C
https://nls948.corp.cnl.ca/otcs/cs.exe/properties/54203268 Enterprise:Corporate Records:Ir
Administration:Supporting Records:Management System Documents:XRF Analyzer Location Lo
https://nls948.corp.cnl.ca/otcs/cs.exe/properties/54202960 Enterprise:Corporate Records:Ir
Administration:Supporting Records:Management System Documents:XRF Device Prior to Use (
https://nls948.corp.cnl.ca/otcs/cs.exe/properties/54203061 Enterprise:Corporate Records:Ir
Administration:Supporting Records:Management System Documents:XRF Material Verification I

TOTAL DOCUMENTS CREATED: 800

IMPORT FINISHED
[2021/03/25 10:29:39.8321708]
.....
Time taken to import 32 minutes, 18 seconds
Time taken per document 2.423300961125 seconds,
```

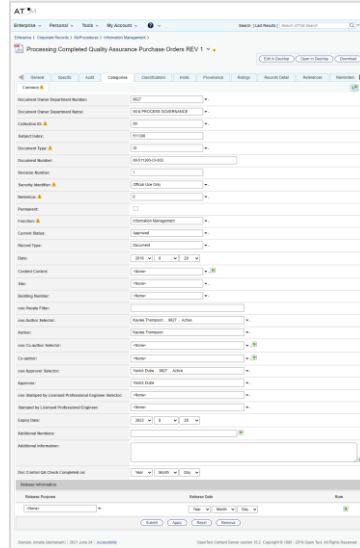
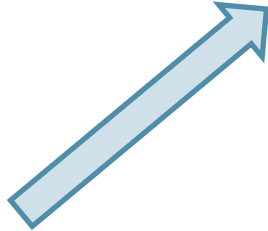
Status: Ready

Fastman Spotlights



A screenshot of the AT+ system interface showing a complex form with many fields and tabs. The form is titled 'Processing Compliant Quality Assurance Purchase Orders REV 1'. It has a top navigation bar with 'Home', 'My Account', and 'Search' options. Below the navigation bar, there are several tabs: 'Home', 'Search', 'Add', 'Categories', 'Status', 'Processes', 'Setup', 'Account Data', 'Management', and 'Permissions'. The main content area is filled with numerous input fields, dropdown menus, and checkboxes, organized into sections. The form is titled 'Processing Compliant Quality Assurance Purchase Orders REV 1'.

3 cats simplified to
1 cat w/ attributes



A screenshot of the AT+ system interface showing a simplified form with fewer fields and tabs. The form is titled 'Processing Compliant Quality Assurance Purchase Orders REV 1'. It has a top navigation bar with 'Home', 'My Account', and 'Search' options. Below the navigation bar, there are several tabs: 'Home', 'Search', 'Add', 'Categories', 'Status', 'Processes', 'Setup', 'Account Data', 'Management', and 'Permissions'. The main content area is filled with input fields, dropdown menus, and checkboxes, organized into sections. The form is titled 'Processing Compliant Quality Assurance Purchase Orders REV 1'.

CNL Use-Case: Revamp Categories

- Procedures from the TRAK archives were transferred over to the new procedure centre using a different and simplified category set with less attributes
- CNL used BDM to extract the old category set and transfer over the data to the new category set

Fastman Spotlights

CNL Use-Case: Change Attributes

- “Who doesn’t need this?” – Amalia Damian. We are in a continuous change
- BDM allows to quickly change values in the metadata using the update attributes tool (**1000 documents in 20 minutes**)

```
damianam-UpdateAttributes-2021-02-23-15-27-00.log
damianam-UpdateAttributes-2021-02-23-15-31-03.log
damianam-UpdateAttributes-2021-02-23-15-32-25.log
damianam-UpdateAttributes-2021-02-23-15-33-53.log
damianam-UpdateAttributes-2021-02-24-11-48-33.log
damianam-UpdateAttributes-2021-02-24-15-00-00.log
damianam-UpdateAttributes-2021-02-25-11-26-37.log
damianam-UpdateAttributes-2021-02-25-13-44-41.log
damianam-UpdateAttributes-2021-03-01-06-34-27.log
damianam-UpdateAttributes-2021-03-01-07-37-52.log
damianam-UpdateAttributes-2021-04-23-15-59-54.log
damianam-UpdateAttributes-2021-04-23-16-09-34.log
damianam-UpdateAttributes-2021-04-23-16-35-37.log
damianam-UpdateAttributes-2021-04-27-12-21-13.log
damianam-UpdateAttributes-2021-05-05-12-39-09.log
damianam-UpdateAttributes-2021-06-04-12-32-55.log
damianam-UpdateAttributes-2021-06-09-07-25-40.log

https://nls948.corp.cnl.ca/otcs/cs.exe/properties/54368047 Enterprise:Corporate Records:Informatic
Administration:Supporting Records:Supporting Records for Process Documents:Sick Leave:Current Ap
https://nls948.corp.cnl.ca/otcs/cs.exe/properties/54328082 Enterprise:Corporate Records:Informatic
Administration:Supporting Records:Supporting Records for Process Documents:Program Description D
Approved Revision
https://nls948.corp.cnl.ca/otcs/cs.exe/properties/54367943 Enterprise:Corporate Records:Informatic
Administration:Supporting Records:Supporting Records for Process Documents:Request To Obsolete/I
Position/System Number(s) Form:Current Approved Revision
https://nls948.corp.cnl.ca/otcs/cs.exe/properties/54367430 Enterprise:Corporate Records:Informatic
Administration:Supporting Records:Supporting Records for Process Documents:Safety Analysis (PRD):t
Analysis (PRD) REV 3

TOTAL DOCUMENTS UPDATED: 1000

IMPORT FINISHED
[2021/04/23 16:30:01.3089779]
.....
Time taken to import 20 minutes, 27 seconds
Time taken per document 1.2271359695 seconds,
```

Status: Ready

A few Data Transformation Hub Scenarios

1. Perform a **full migration** of a **file share** into Content Suite keeping folder structure and assigning categories and attributes
2. Update existing categories on documents with **different attributes**
3. Perform a **delta migration** and **load document versions**
4. Bulk update **Records Management** in Content Suite
5. **Manage Move** the content to a different location within Content Suite
6. **Extract documents** to share with a group using a different system

CONTACT US

Brian.LaPointe@fastman.com

www.fastman.com

 [@FastmanCS](https://twitter.com/FastmanCS)

(NA) +1 310 525 8802

